



# GAT MONTHLY MEMBERSHIP PROGRESS REPORT

Results as of: 12/31/2022

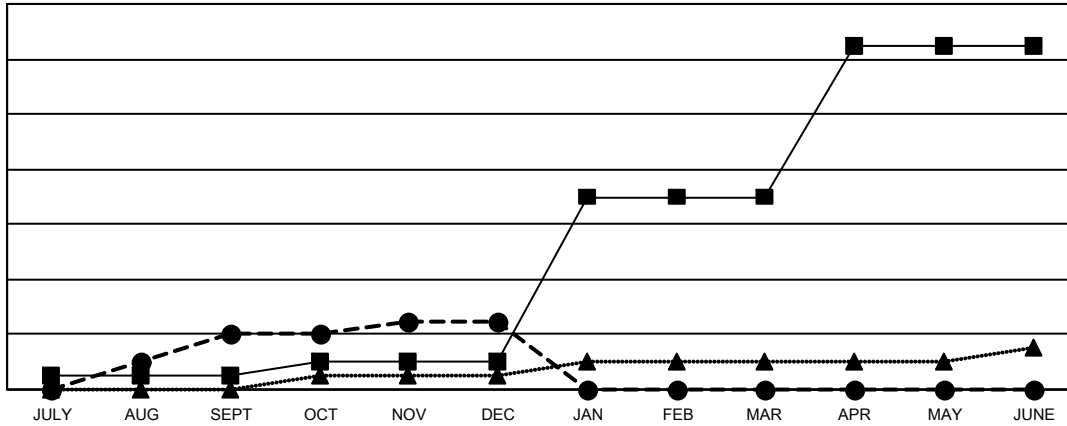
Multiple District 201

LOCATION: AUSTRALIA

Clubs			
RESULTS FOR 2022-2023			
QUARTER	NEW CLUB GOAL	NEW CLUBS	DROPPED CLUBS
JULY/AUG/SEPT	1	4	7
OCT/NOV/DEC	1	1	7
JAN/FEB/MAR	12	0	0
APR/MAY/JUNE	11	0	0

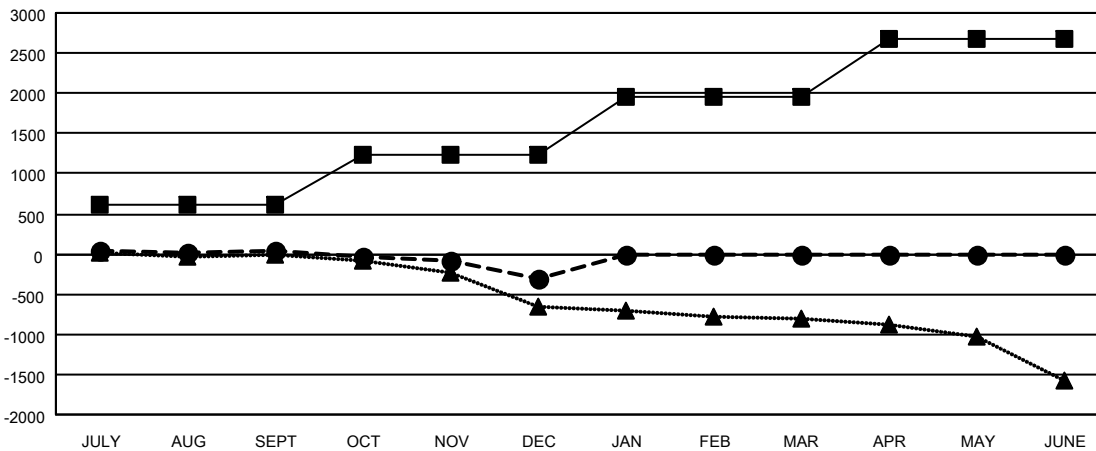
Members			
RESULTS FOR 2022-2023			
QUARTER	MEMBER GROWTH NET GOAL	MEMBER GROWTH ACTUAL	DROPPED MEMBERS ACTUAL (including transfers)
JULY/AUG/SEPT	618	794	634
OCT/NOV/DEC	612	603	848
JAN/FEB/MAR	732	0	0
APR/MAY/JUNE	713	0	0

GOALS AND ACTUAL NEW CLUBS CUMULATIVE



- CURRENT YEAR GOALS FOR NEW CLUBS
- CURRENT YEAR ACTUAL NEW CLUBS
- ▲- LAST YEAR ACTUAL NEW CLUBS

GOALS AND ACTUAL MEMBERS CUMULATIVE



- MEMBER GROWTH NET GOAL
- MEMBER GROWTH ACTUAL
- ▲- LAST YEAR MEMBERSHIP ACTUAL

DROPPED CLUBS: 14	
<b>DROPPED MEMBERS</b>	
DECEASED	184
CLUB CANCELLED	6
OTHER	1,292
<b>TOTAL</b>	<b>1,482</b>

483 CLUBS OF 1162 ADDED 1 OR MORE NEW MEMBERS

[CLICK HERE FOR CUMULATIVE MEMBERSHIP DATA](#)

GENDER DISTRIBUTION	
MALE	14,064 (63.13%)
FEMALE	8,207 (36.84%)
NON BINARY	4 (0.02%)
PREFER NOT TO ANSWER	3 (0.01%)
<b>TOTAL FAMILY UNIT MEMBERS</b>	<b>3,421</b>
<b>FAMILY MEMBERS PAYING HALF DUES</b>	<b>1,737</b>